

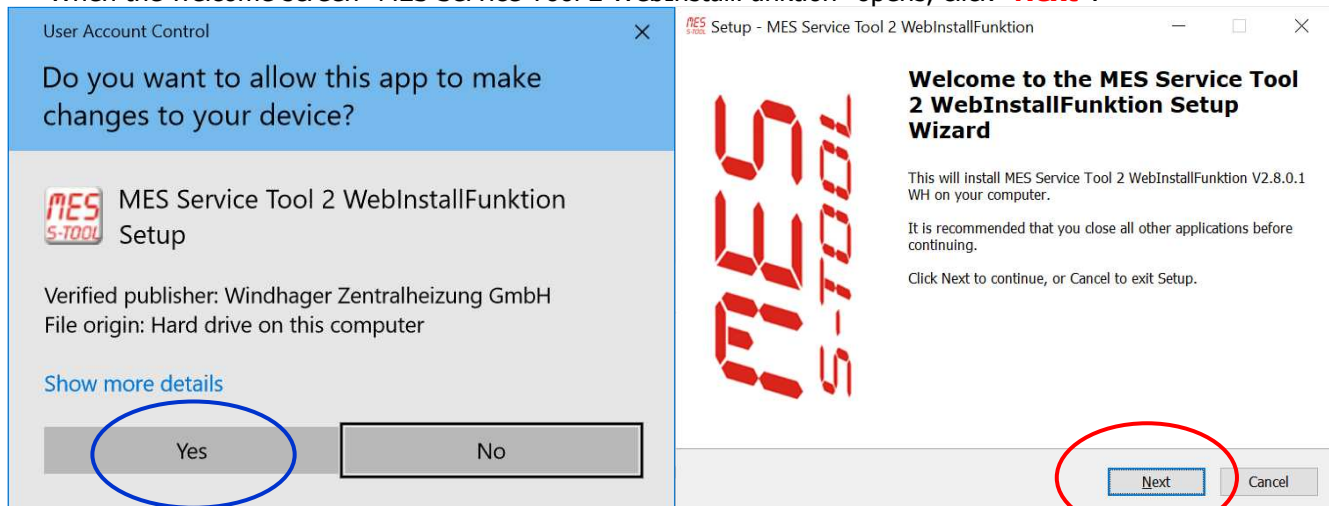
Quick Start Guide for the Installation of „MES Service Tool 2 (V2.9.0.2)“

Warning:

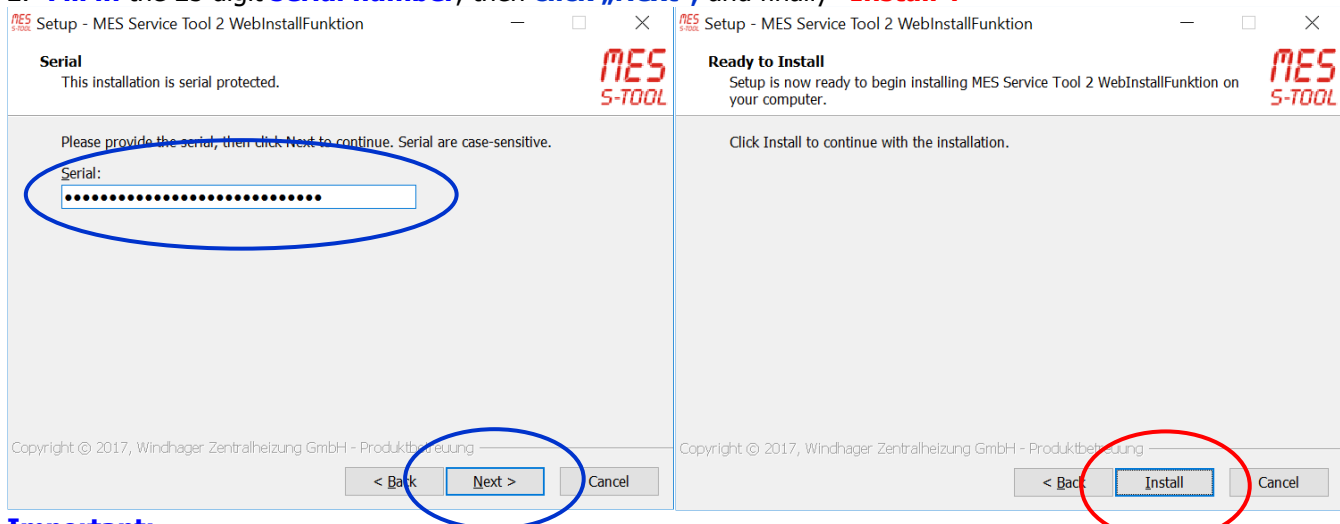
) Performing an installation via the web should only be done with a good internet connection!

Installation / modification under the Windows 10.0 and 11.0 operating system.

- 1.- Confirm the User Account Control security alert by clicking **"Yes."**
When the welcome screen "MES Service Tool 2 WebInstallFunktion" opens, click **"Next"**.



- 2.- Fill in the 25 digit **serial number**, then click **"Next"**, and finally **"Install"**.



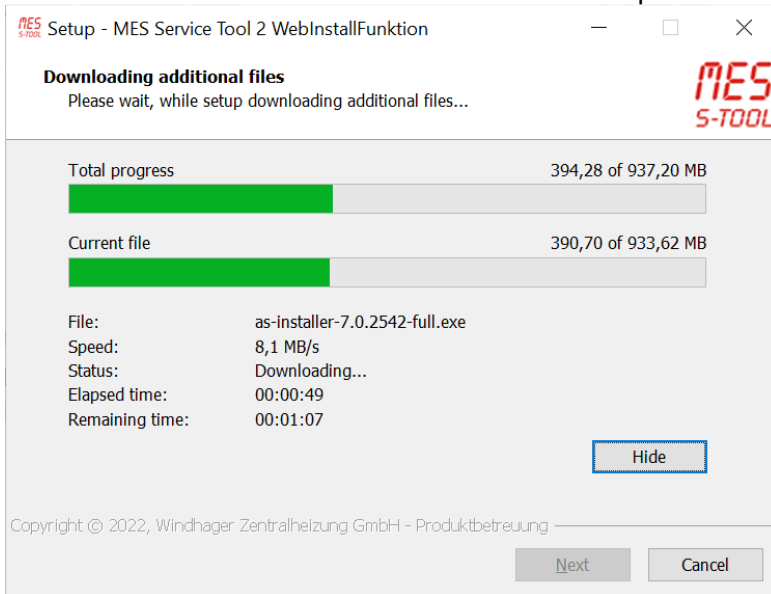
Important:

When the serial number is filled in, hyphens must be used accordingly.

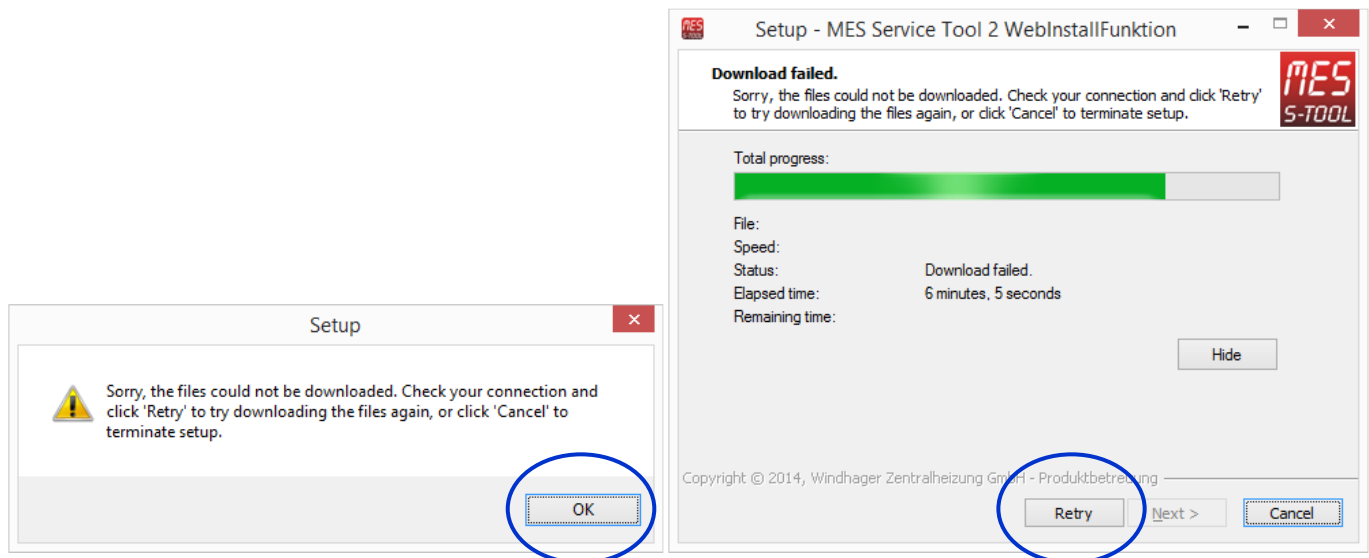
Example: XXXXX-XXXXX-XXXXX-XXXXX-XXXXX

A valid serial number can be requested by contacting your export or OEM manager.

3.- Please **do not click "Cancel"** while additional required files are downloading.



4.- If this error message occurs during downloading, please confirm with **"OK"** and restart the current partial download by clicking **"Retry."** If **multiple error messages** occur simultaneously, please check the quality of the internet connection. For example, if using mobile networks (Vodafone, etc.) select a **different location** or try at a **different time**.

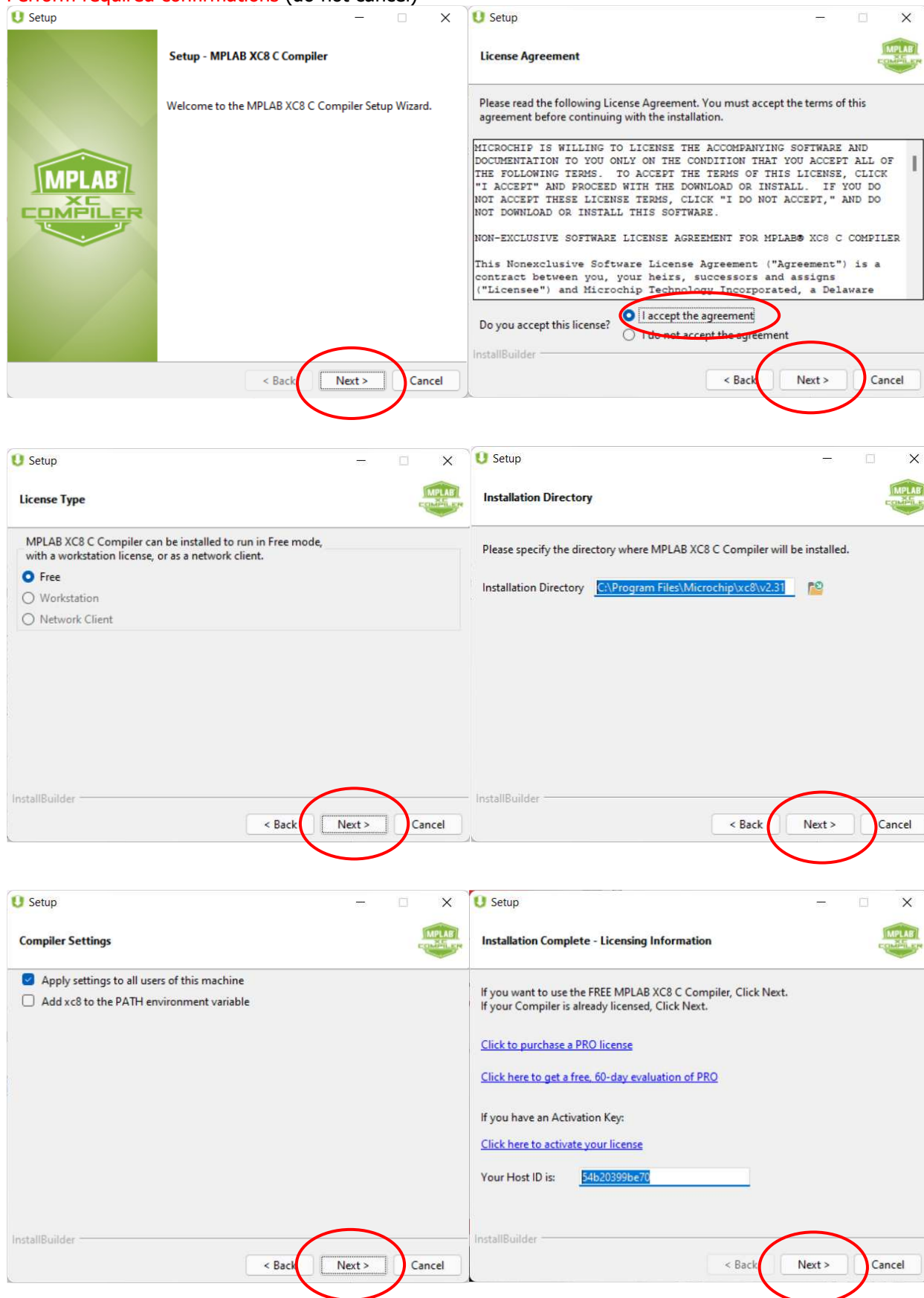


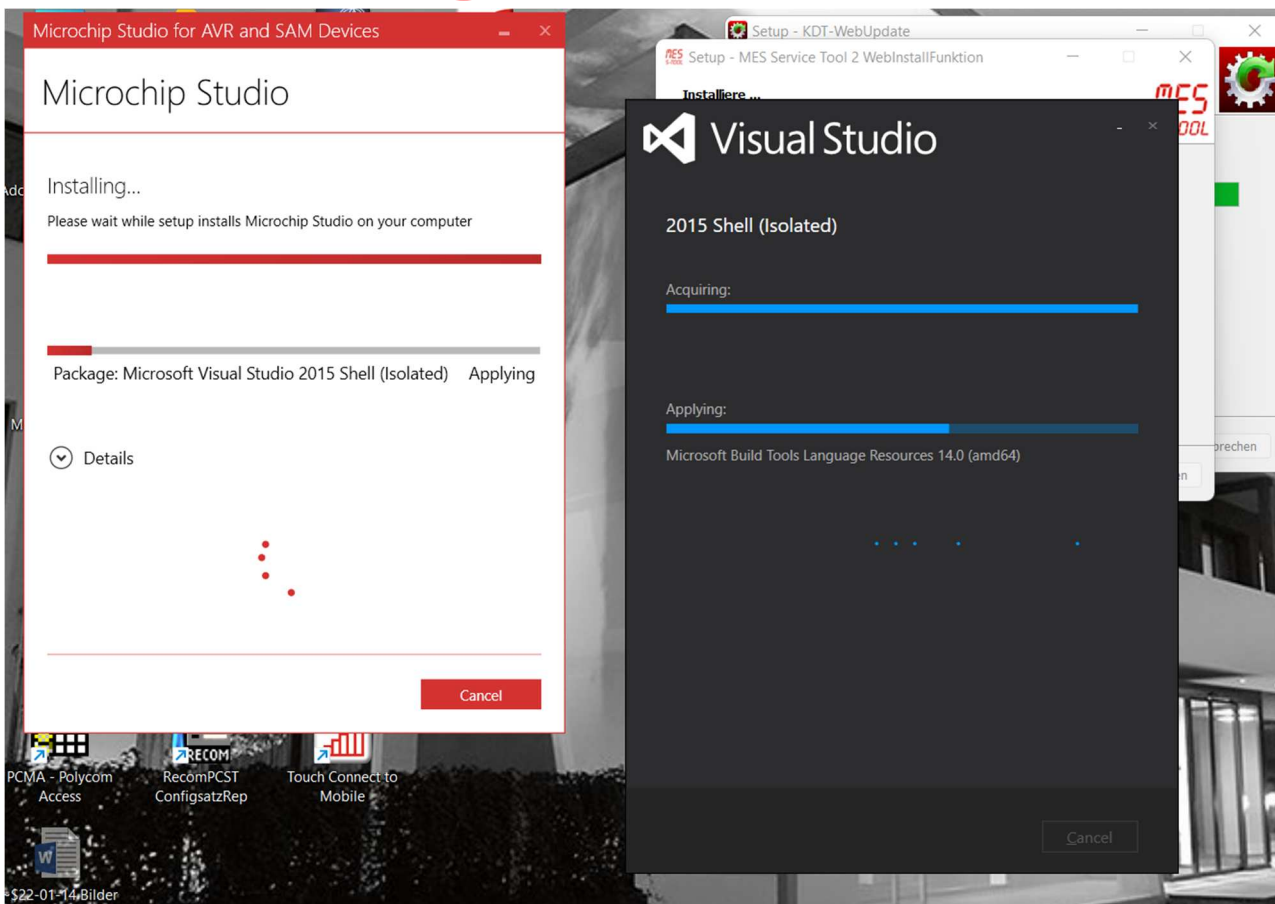
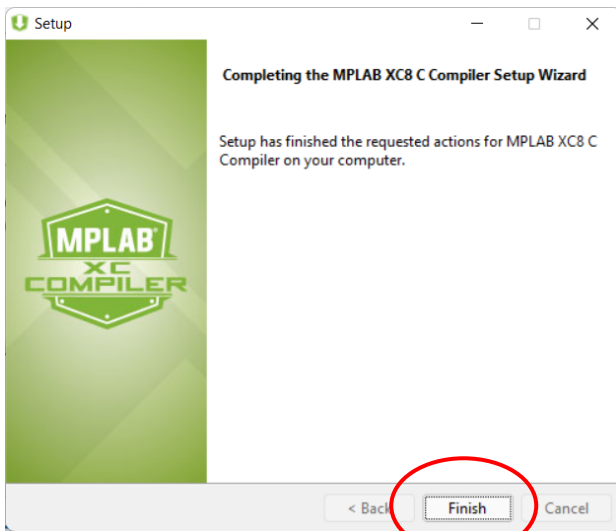
NOTE:

If repeated error messages occur during the installation, please contact your IT system administrator, or email detailed error information to johann.haslauer@windhager.com

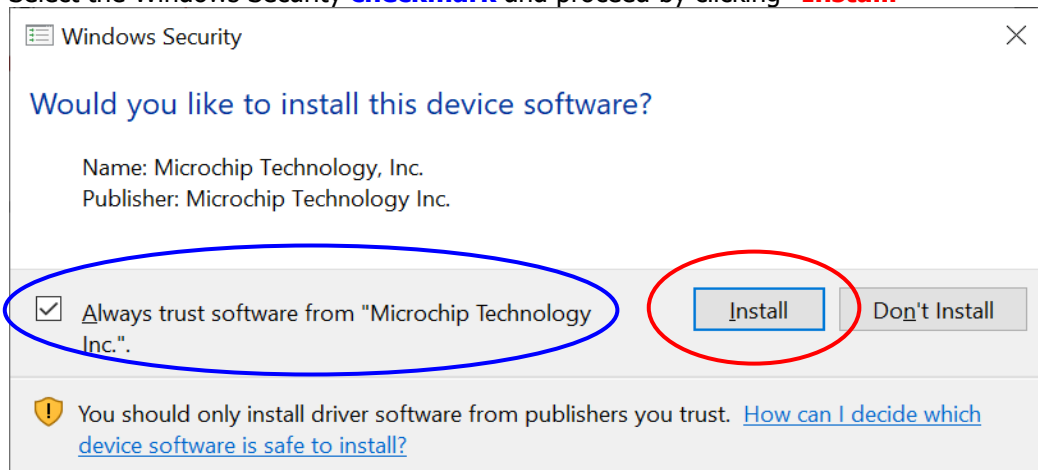
5.- After successful completion of the downloads, first start the installation of any required extensions.
(if not already available: Micorchip Studio, MPLAB XC8 C Compiler, Visual Studio etc.)

Perform required confirmations (do not cancel)

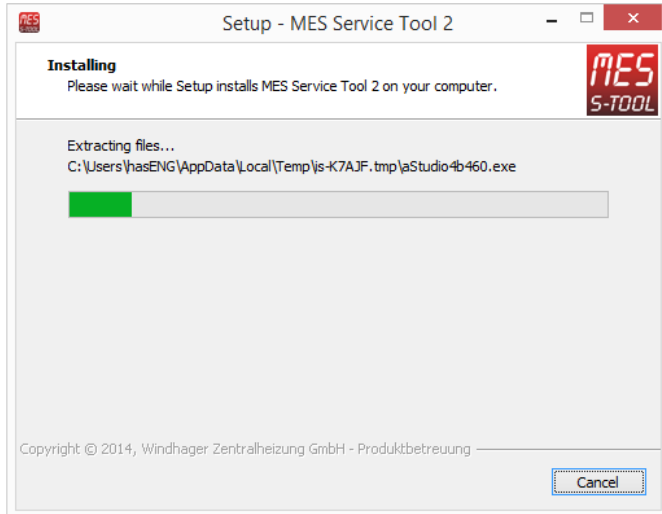




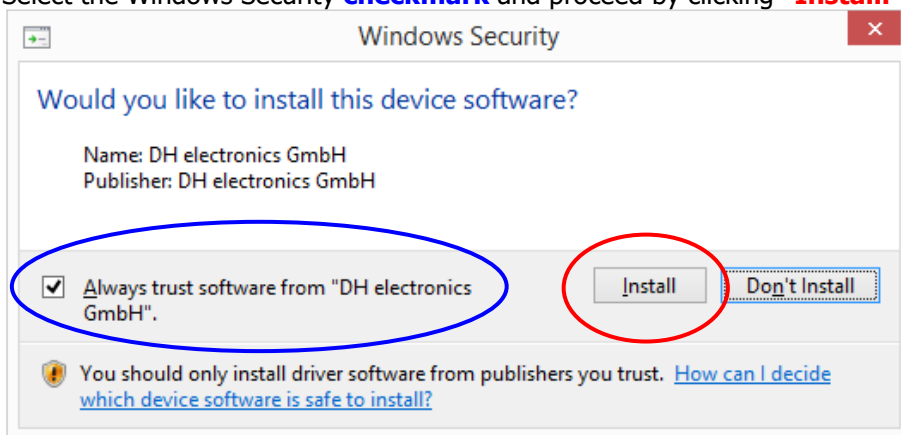
Select the Windows Security **checkmark** and proceed by clicking **"Install."**



6.- The actual "MES Service Tool 2" installation with the required drivers is starting (consists of several parts/steps). Please do **not click "Cancel."**

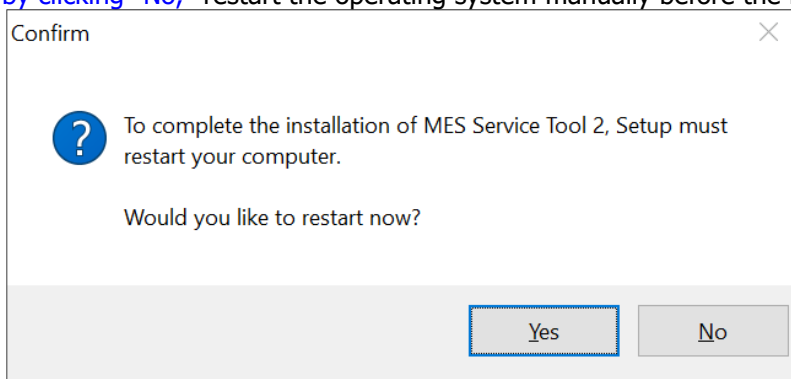


Select the Windows Security **checkmark** and proceed by clicking **"Install."**



7.- The operating system must be restarted to complete the installation/modification.

By clicking **"Yes,"** the operating system is restarted immediately;
by clicking **"No,"** restart the operating system manually before the first use of the new MES Service Tool 2.





WARNING:

After restarting the operating system, complete the following steps:

It is imperative that the XLON Interface and AVR Interface are docked to an available USB port 1x before using the MES Service Tool (1+2).

The newly installed device (interface) drivers will eventually be assigned and trained here.

If an interface is identified as new, please wait for the device/driver installation for the USB port to be completed.

8.- Installing the „Windhager System Ethernet Service“

As of MES Service Tool 2 Version V2.9.0.2, the "Windhager System Ethernet Service" is required for reading in systems via Ethernet (LAN).

This is provided separately via a menu-guided installation program.

9.- Installing the ProgFiles

After successfully installation of the MES Service Tool 2 Basic installation, the required Progfiles Vxxxx must additionally be installed. These are provided separately via menu-driven installation program.

Only after the installation of the associated ProgFile, the MES Service Tool 2 will be ready!

